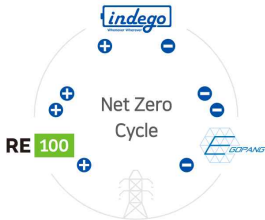


Sustaining our planet

Clean energy and freely moves to supply power

2025



## “Sustaining Our Planet.”

Indego is a carbon-neutral system that presents a new paradigm of energy by realizing Net Zero from the process of electricity generation to consumption for our sustainable future.

Through the RE100 business, clean energy is produced, and indego stores clean energy and freely moves to supply power. Ultimately, Indego is pursuing a business model of the NetZero Cycle, which provides a variety of convergence services based on eco-friendly.



### Vision ARBON NEUTRAL TECHNOLOGY

Securing based technology for reuse of spent batteries that will come out of decommissioning of electric vehicles in the future, as well as new batteries.

- Battery Pack optimization and production
- 3D CT non-destructive diagnostic technology
- EV battery reuse technology



### Mission CREATION OF A NEW “MARKET.”

Replacing conventional devices with products based on carbon-neutral technology. Leading the market with environmental solutions and economic feasibility.

- 에너지모빌리티(그린발전기, 이동충전)
- 카본 풀필먼트 서비스(RE100)



### Philosophy Sustaining Our Planet

Contributing to realistic carbon neutrality by utilizing our energy technology and making it easily accessible to everyone, thereby making the entire planet sustainable.

“Pursuing a Sustainable World”

## Leading a new era of energy mobility.

Supplying clean energy through mobile battery trucks that eliminate greenhouse gases in the era of mass electrification.



# Concept

Energy Mobility

## Indego : independent power to go

indegO is a mobile ESS based on EV battery packs. It is an eco-friendly power source that replaces internal combustion engine generators at festivals, outdoor filming, and construction sites. indegO provides efficient and sustainable solutions in response to decarbonization paradigms such as carbon neutrality.





Internal combustion engine generator

VS

## indegO

### Eco

Harmful exhaust gases such as PM, CO<sub>2</sub>, SO<sub>x</sub>, and NO<sub>x</sub> are not generated.

### Quietness

Because it does not use an engine, it is more than 30 times quieter than an internal combustion engine generator in the same class.

### Connectivity

All indegas are connected by 5G. Real-time remote management of multiple devices from one place.

### Productivity

It provides stable power with high efficiency and accurate output. Power control maximizes work efficiency.

### Safety

Equipped with a battery pack for electric vehicles that meets safety standards. Equipped with real-time remote monitoring, remote control, and emergency stop function.

### Scalability

It is a standardized enclosure that can be used extensively with multiple devices, and the FR function for VPP service is also applied.

## indegO CHARGE

### EV Fast Charger

- Output capacity : 50kW DCP
- Battery capacity : 110kWh
- Ingress Protection : IP67



## indegO MOBILE

### Off-grid Power Supply

- Output capacity : 50kW
- Output voltage : 3-phase 380V
- Battery capacity : upto 110kWh
- Ingress Protection : IP67

## indegO STATION

### Long-term Power Supply

- Output capacity : ACP 50kW / DCP 200kW
- Output voltage : 3-phase 380V
- Battery capacity : upto 330kWh
- Ingress Protection : IP52





#### Eco-Friendly

Harmful exhaust gases such as PM, CO<sub>2</sub>, SO<sub>x</sub>, NO<sub>x</sub>, are not generated.



#### Productivity

It provides stable power with high efficiency and accurate output.  
Power control maximizes work efficiency.



#### Safety

Equipped with a battery pack for electric vehicles that meets safety standards.  
Equipped with real-time remote monitoring, remote control, and emergency stop function.



#### Quietness

It is more than 30 times quieter than an internal combustion engine generator in the same class.



#### Connectivity

All indego are connected by 5G.  
Real-time remote management of multiple devices from one place.



#### Scalability

It is a standardized enclosure that can be used extensively with multiple device, and the FR function for VPP service is also applied.

### indegO CHARGE

### indegO MOBILE

### indegO STATION

Maximum Output Power	50kW	50kW	ACP 50kW / DCP 200kW
Rating Voltage	-	220VAC / 380VAC	220VAC / 380VAC
Output frequency	50 / 60Hz	50 / 60Hz	50 / 60Hz
Phase	3P4S / SP2W	3P4S / SP2W	3P4S / SP2W
Battery Capacity	110kWh	110kWh	~ 330kWh
Battery Chemistry	Li-ion NCM Chemistry	Li-ion NCM Chemistry	Li-ion NCM Chemistry
Battery Protection Level	IP67, IP6K9K	IP67, IP6K9K	IP67, IP6K9K
Outer Harbor Protection Grade	IP54	IP54	IP52
Fuel Used	Electricity	Electricity	Electricity
Dimension	1 ton truck based	1 ton truck based	2,800 x 1,600 x 1,900 mm
Weight	1,200kg	1,200kg	3,500kg
Maximum Noise level	50dB(A) at 1 meter	50dB(A) at 1 meter	60dB(A) at 1 meter



## Battery Series

The foundation of energy mobility

### Indego MoBatt

The expansion of the battery-related market makes it difficult for related companies to supply and demand batteries.

Accordingly, we have increased the stability of our business model through the development and production of battery packs.

Unlike the industrial ESS, we have secured specialized markets such as electric ships and retrofits by producing battery packs for vehicles optimized for the use environment of mobile ESS.

We have also prepared the best environment for flexible pack production.



55kWh battery pack

Rated Energy	55kWh
Rated Capacity	156Ah @ 25°C
Nominal Voltage	352.32V
Range of Voltage	288V ~ 408V

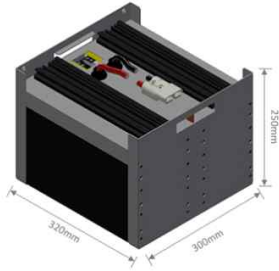
Size	1,298 x 1,348 x 126 mm
Weight	360kg
IP Rating	P56
Certification	KC62619 Ed. 2.0 (2023)

Reference (LFP & Reuse)



Forklift

- Output Voltage : 48VDC
- Battery Type : LFP



Deep Cycle

- Output Voltage : 24VDC
- Battery Type : Reuse battery



E-Scooter

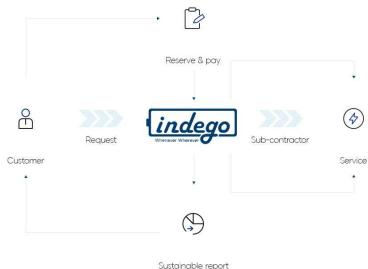
- Output Voltage : 48VDC
- Battery Type : NCA

# indego Platform

Supply and demand Connecting platform

## indegO service

indegO service is a platform that connects consumers and rental operators. The platform calculates the required power and equipment when a consumer accesses the application and inputs the purpose, location, time, and other requirements. Then it matches them with local businesses, enabling faster and more convenient business processing.



Available in 2 ways

### Purchase Service

Customers can purchase indego products directly. Since there is no fuel purchase or periodic maintenance cost compared to an internal combustion engine generator, a significant reduction in operating expenses is possible, and the payback period for investment is also significantly reduced.

### Subscription Service

For customers burdened with the initial investment, we have prepared a subscription service that allows you to rent indego for a monthly fee. Instead of paying a small monthly fee for the customer, operating costs are significantly lower because there are no fuel costs that would have been incurred with an internal combustion engine generator. The difference comes back to the economy beyond paying the monthly subscription fee. If there is a problem with the equipment during the rental, we will exchange it for another product, so there is no need to worry about disrupting your business.

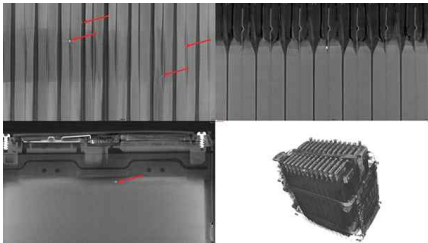


## Safety & performance

Diagnostic Evaluation

### Advanced Battery

In addition to traditional battery diagnostic evaluation methods, aeonus supports battery applications that ensure safe and long life through high-level battery diagnostic evaluation using non-destructive testing facilities. In addition, we are accumulating battery status data in real-time and building data-based battery performance prediction and measurement technology. Through these technologies, we will continue to introduce economical and safe applications from used batteries in the future.



Detection of battery anomalies such as cracks, deformation, swelling, debris, and bad electrode figure without disassembling used cells & modules

### 3D CT non-destructive battery diagnosis

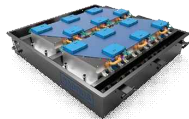
Advanced diagnostics for reliability verification on reusable battery product



Battery internal diagnosis



Electrical performance  
diagnostic evaluation



Product based on used  
batteries

# Technology

## ESS

Battery pack optimization

### Battery pack optimization



Battery Module



Battery Pack



inigo has secured battery pack manufacturing technology that complies with electric vehicle battery enforcement rules (vibration, thermal shock, submersion, and drop standards). Products designed for thermal management optimization, air conditioning/energy density improvement / safety-considered PRA (Power Relay Assembly) comply with the KMVSS driving battery standard and the UN ECE R100 standard.

All mobile ESS products manufactured with the company's battery packs are equipped with anti-vibration design technology. Since it is modularized in units of 50 kW, it can be applied to various purposes depending on the possibility of system parallelism. Built-in PMS is suitable for the alternative operation of emergency generators and satisfies KESCO pre-use inspection by securing ESS safety that meets the standards of the Ministry of Industry. Optimized HMI for convenient use in the field is also installed.

#### 4X efficiency compared to existing ESS

- Safety (anti-shock/temperature/humidity/rate)
- Occupied size
- All Weather
- Mobility

# Technology

## Advanced

### Realization of battery management by applying AICBM technology

01

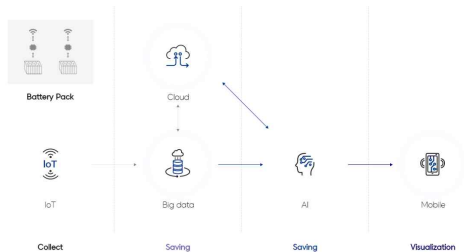
Collect and integrate three-dimensional data

Collect real-time usage and operational data from Indigos in the field Collect real-time battery critical data (BMS) / system critical data (Failure & impact) Accumulate physical deformation and failure data through regular battery non-destructive testing

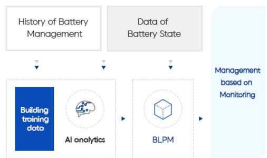
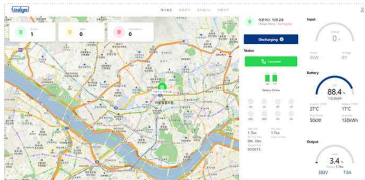
02

All Around Battery Prediction

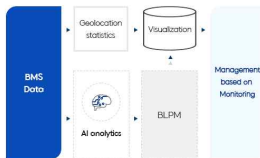
Date Fusion: Primary Battery [System data + environmental data + 3D physical deformation data] indigo / Predicting and managing the lifespan / safety of individual battery packs



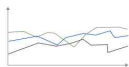
The concept of BMS with AICBM



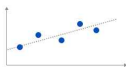
\* BLPM: Battery Lifetime Prediction Model



\* BLPM: Battery Lifetime Prediction Model



Battery Lifetime Data



Classification and clustering



Develop a Battery Lifetime Prediction Model

**Indego On-Road** Quick moving ability



Power output: 50kW  
 Voltage output: 3phases 380V / 50Hz  
 7kW AC type or, 50kW CCS1  
 Capacity: 139kWh



**Indego Package** Large capacity



Power output: 50kW  
 Voltage output: 3phases 380V  
 Capacity: 232kWh

**ENVIRONMENTAL**



- 100% Noise Reduction
- 100% Dust Reduction
- 80% CO2 Reduction

**ECONOMICAL**

- Fuel Cost 90%
- Carbon Credit 80%



**Use Case : 10MWh generation**

**Diesel Generator 10MWh**

Fuel Cost USD10,000@6,400L  
 CO2 emission 17toe

**Indego 10MWh**

Charging Cost US\$500@5cents/kWh  
 Carbon Credit 12toe acquired

**Super savings at fuel cost and maintenance**



Carbon Neutral Outdoor festival



Blackout Troubleshooter



Commercial / Construction



## Indego 50 On-Road

Output	Power	50kW(60kVA). Max
	Voltage	380VAC / 220VAC
	Phase	3p4w / 1p2w
	Frequency	50Hz
	THD	<5%
Off-Grid	Frequency	50Hz
	Voltage accuracy / Distortion	<3%
	Power Factor	>0.7
	Dynamic voltage stability & recovery	20ms
Input	AC	3p4W 380VAC
	DC	EV Charger (CCS1 Combo)
Storage capacity		139kWh / 3 Battery Packs
Noise		50dB(A) at 1meter. Max
Dimension		1.6 X 2.8 X 1.3 Meter
Weight		Approx. 1,200kg
Enclosure		Vehicle onboard (Light truck)

\* Battery capacity varies by model and requirement.

- Vehicle is excluded.
- The design will be changed similar to package type design. .



## Indego 50 Package

Output	Power	50kW(60kVA). Max
	Voltage	380VAC / 220VAC
	Phase	3p4w / 1p2w
	Frequency	50Hz
	THD	<5%
Off-Grid	Frequency	50Hz
	Voltage accuracy / Distortion	<3%
	Power Factor	>0.7
	Dynamic voltage stability & recovery	20ms
Input	AC	3p4W 380VAC
	DC	EV Charger (CCS1 Combo)
Storage capacity		232kWh / 5 Battery Packs
Noise		50dB(A) at 1meter. Max
Dimension		1.6 X 2.8 X 1.9 Meter
Weight		Approx. 2,600kg
Enclosure		Container Type

\* Battery capacity varies by model and requirement.

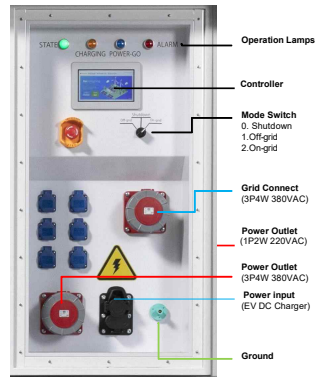




### Indego 50 On-Road & Package

- Delivery : FOB Busan Port
- Payment : 100% advance T/T payment or irrevocable L/C at sight
- Shipment : After 6 month from payment receipt
- Warranty : Battery (8 year) / Parts (1 year) on contract condition
- Engineer Training : excluded
- One-year spare part : optional
- Inspection : Third party inspection or FAT acceptable (All cost is born by buyer)
- Operation : Trained electrical engineer
- More detail information can be released after signing of NDA / MOU / LOI
- More detail term & condition will be described on the contract
- If there is any accident after delivery of indego, there is no responsibility from aeonus side except engineering problem
- Vehicle is excluded in the price.

- 🔑 Super easy to operate and plug & power
- 🔑 Quick response to demand than genset
- 🔑 Charging from Standard AC power & DC Fast EV charger, available from solar invertors.
- 🔑 Working ESS mode at Grid connected



## A new era of power last mile

Clean power instead of diesel generators  
Clean electric energy instead of the fossil fuel

### Events & festivals

Powering concerts, festivals and local events

### Construction & industrial sites

Safe and powerful temporary power supply  
Clean power supply solution

### Smart city

Energy Bridge of Urban Distributed Power  
and Demand Management

### Mobile EV charging service

Build temporary electric vehicle  
charging stations in stadiums or  
outdoor parking lots



## Partner

We have cooperated with partners in the electricity and cultural industries.

The logo for poen' features the word "poen'" in a lowercase, sans-serif font. The "o" is white with a green outline, and the "e" is green. The apostrophe is black.The logo for SOFT BERRY consists of a green circular icon with a white plus sign inside, followed by the words "SOFT BERRY" in a bold, green, uppercase sans-serif font.The logo for (주)이지무브 EAST MOVE features a stylized orange and yellow icon of a hand holding a pen, followed by the Korean text "(주)이지무브" and the English text "EAST MOVE" in a black, uppercase sans-serif font.The logo for Gridwiz features the word "Gridwiz" in a green, uppercase sans-serif font. The "i" in "Grid" has a small blue dot above it.The logo for Baker Hughes features the words "Baker Hughes" in a black, uppercase sans-serif font, followed by a green stylized icon of two curved lines.The logo for LSELECTRIC features the letters "LS" in a bold, blue, uppercase sans-serif font, followed by the word "ELECTRIC" in a smaller, blue, uppercase sans-serif font.The logo for KCC features the letters "KCC" in a bold, white, uppercase sans-serif font, set against a blue rectangular background with a white border.The logo for HYUNDAI ENGINEERING & CONSTRUCTION features a green triangle icon, followed by the word "HYUNDAI" in a bold, blue, uppercase sans-serif font, and "ENGINEERING & CONSTRUCTION" in a smaller, blue, uppercase sans-serif font below it.The logo for LG Energy Solution features the LG logo (a red circle with a white 'L' and a blue circle with a white 'G') followed by the words "LG Energy Solution" in a black, uppercase sans-serif font.The logo for SK on features a stylized orange and red icon of a triangle with a white dot inside, followed by the letters "SK" in a bold, red, uppercase sans-serif font, and "on" in a smaller, orange, lowercase sans-serif font.The logo for CATL features the letters "CATL" in a bold, blue, uppercase sans-serif font.The logo for aeonus features the word "aeonus" in a lowercase, blue, sans-serif font, enclosed within a blue rectangular border.

# Reference



to ENERGY MOBILITY



indego MOBILE™